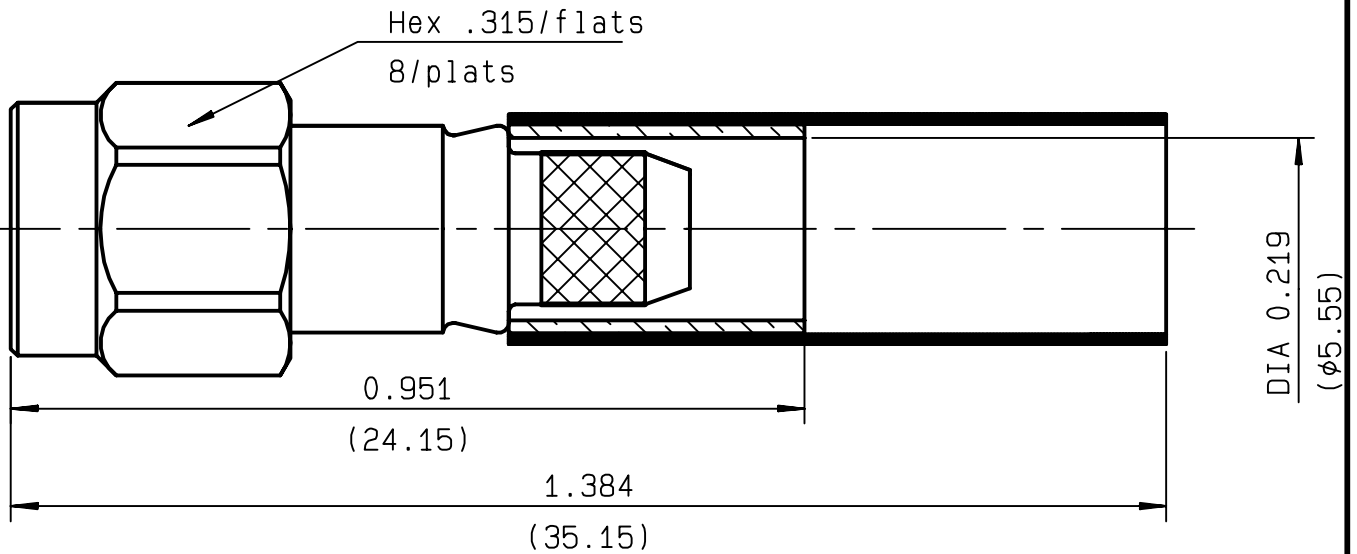


**STRAIGHT PLUG CRIMP TYPE
CABLE 5/50 S**

R125.076.201
SERIES SMA



NOMINAL IMPEDANCE	50 Ω	CABLES : LMR 200	
FREQUENCY RANGE	0-12.4 GHz		
TEMPERATURE RATING	-65/+165 °C		
V.S.W.R	1.15 + .01 x F(GHz)Maxi		
RF INSERTION LOSS	0.06 √F(GHz) dB Maxi		
VOLTAGE RATING	335 Veff Maxi		
DIELECTRIC WITHSTANDING VOLTAGE	1000 Veff Mini		
INSULATION RESISTANCE	5000 MΩMini		OTHERS CHARACTERISTICS
HERMETIC SEAL	NA Atm.cm ³ /s		CABLE RETENTION 180 N Mini
LEAKAGE (pressurized only)	NA		CENTER CONTACT RETENTION
MECHANICAL DURABILITY	500 Cycles	Axial force - mating end NA N Mini	
WEIGHT	gr	Axial force - opposite end 27 N Mini	
SPECIFICATION		Torque NA cm.N Mini	
		RECOMMENDED TORQUES	
		Mating 100 cm.N	
		Panel nut NA cm.N	
		Clamp nut NA cm.N	

CONNECTOR PARTS	MATERIALS	FINISH	(all values are given in micrometers)
BODY	STAINLESS STEEL	PASSIVATED	
OUTER CONTACT			
CENTER CONTACT	BRASS	GOLD 0.8 OVER COPPER 2	
INSULATOR	PTFE	-	
GASKET	SILICONE RUBBER	-	
OTHERS PIECES	STAINLESS STEEL	PASSIVATED	

ISSUE	CREATION DATE	FILE PART-NUMBER	
9843A00	21/04/1995	95-0400-069	

MASTRIANO

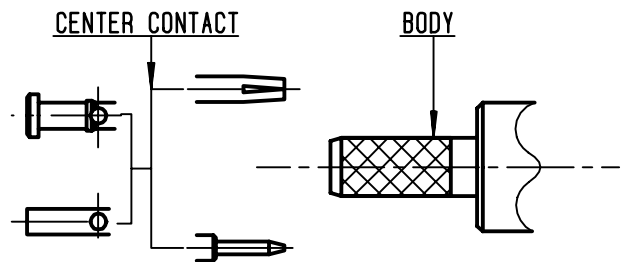
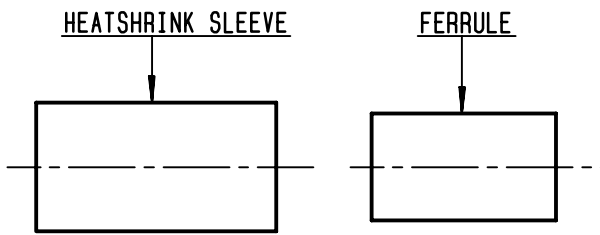
The information given here is subject to change without notice. Design changes may be in order to improve the product.

Connect to the future



R125.076.201

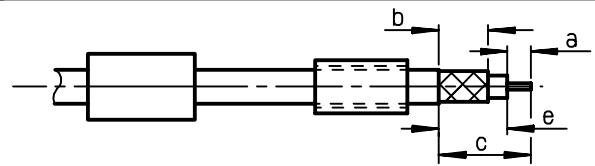
ISSUE 9843A00 SERIES SMA



①

Slide ferrule and heatshrink sleeve onto cable .
Strip the cable .

-
-

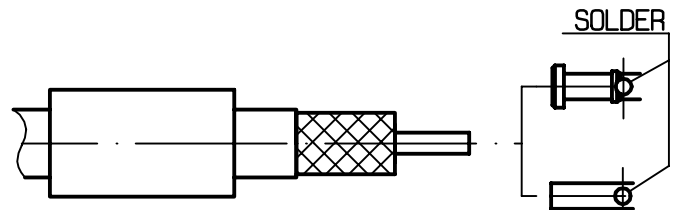


Stripping	a	b	c	d	e
inch	0.079	0.236	0.374	0	0.295
mm	2	6	9.5		7.5

②

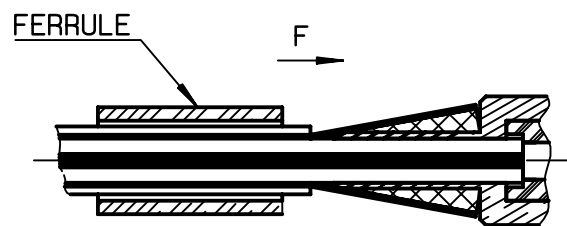
Slide center contact on until it bottoms against cable dielectric .
Solder center contact .
Clean soldered area .

-
-



③

Fan the braid .
Slide cable into body until it bottoms against insulator .
Slide ferrule over the braid .
(In direction F)



④

Crimp the ferrule with crimping tool R 282 223 000 (Hex. : 0.213) or crimping tool R 282 293 000 (M22520/5-01) + dies R 282 235 011 (M22520/5-11)
Cut the excess of braid if necessary
Slide sleeve over ferrule and heatshrink in place .

-
-

Shrink the heatshrink sleeve

